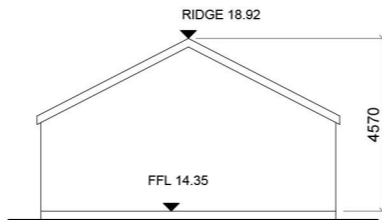
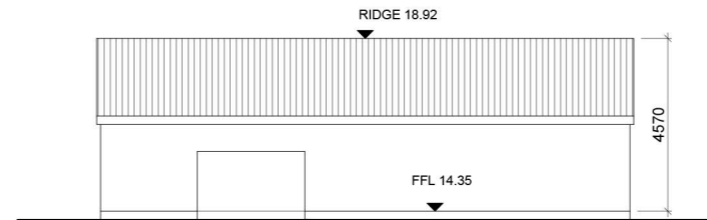


**KEY PLAN**

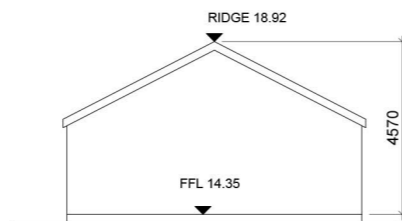
INDICATING POSITION OF STABLE  
 PROPOSED FOR DEMOLITION SHOWN IN ORANGE  
 SCALE 1:500  
 NOTE: SEE CCK DRAWING P050 FOR LOCATION IN CONTEXT



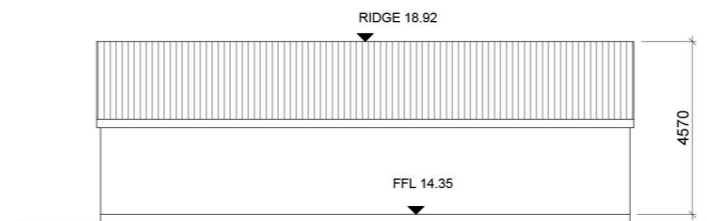
**WEST FACING ELEVATION**  
 SCALE 1:200



**NORTH FACING ELEVATION**  
 SCALE 1:200



**EAST FACING ELEVATION**  
 SCALE 1:200



**SOUTH FACING ELEVATION**  
 SCALE 1:200

- © This drawing is copyright.
- 1 Do not scale this drawing.
- 2 Errors and omissions to be immediately notified to Architect
- 3 All dimensions to be checked on site.
- 4 To be read with relevant Engineers drawings.

revisions	date	inls
description		
Proposed Demolition		drawing no. 1902 P 054
Streamstown		scale 200@A3
Shed		date Mar' 22
		drawn AOL
		checked
job		
DEVELOPMENT AT AUBURN MALAHIDE		
client		
KINWEST LIMITED		
issue		
AUBURN SHD 2 PLANNING		
CONROY CROWE KELLY ARCHITECTS & URBAN DESIGNERS		
65 MERRION SQUARE DUBLIN 2		
phone 01 6613990 fax 01 6765715 email info@cck.ie		