

KEY PLAN

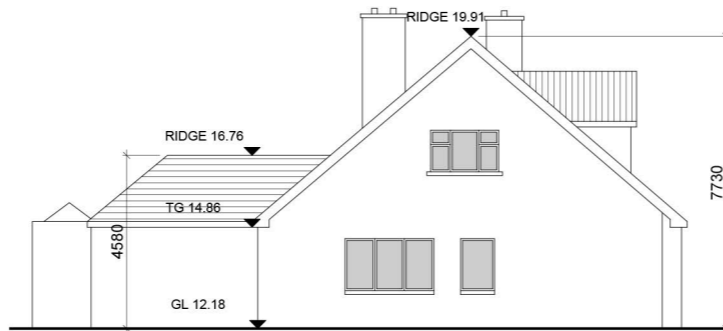
INDICATING POSITION OF DWELLING
 PROPOSED FOR DEMOLITION SHOWN IN ORANGE
 SCALE 1:500
 NOTE: SEE CCK DRAWING P050 FOR LOCATION IN CONTEXT



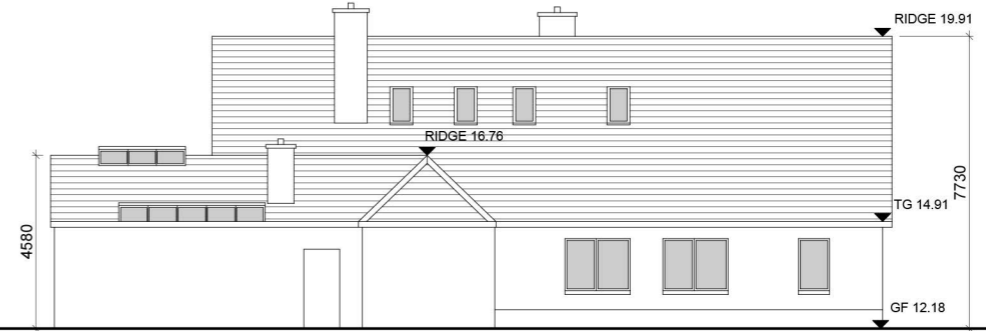
SOUTH FACING ELEVATION
 SCALE 1:200



EAST FACING ELEVATION
 SCALE 1:200



WEST FACING ELEVATION
 SCALE 1:200



NORTH FACING ELEVATION
 SCALE 1:200

- © This drawing is copyright.
- 1 Do not scale this drawing.
- 2 Errors and omissions to be immediately notified to Architect
- 3 All dimensions to be checked on site.
- 4 To be read with relevant Engineers drawings.

revisions	date	inls
description		
Proposed Demolition		
Little Auburn House		
job	scale	drawing no.
DEVELOPMENT AT AUBURN MALAHIDE	200@A3	1902 P 051
client	date	rev.
KINWEST LIMITED	Mar '22	P
issue	drawn	checked
AUBURN SHD 2 PLANNING	KM/AMOL	
CONROY CROWE KELLY ARCHITECTS & URBAN DESIGNERS		
65 MERRION SQUARE DUBLIN 2		
phone 01 6613990 fax 01 6765715 email info@cck.ie		