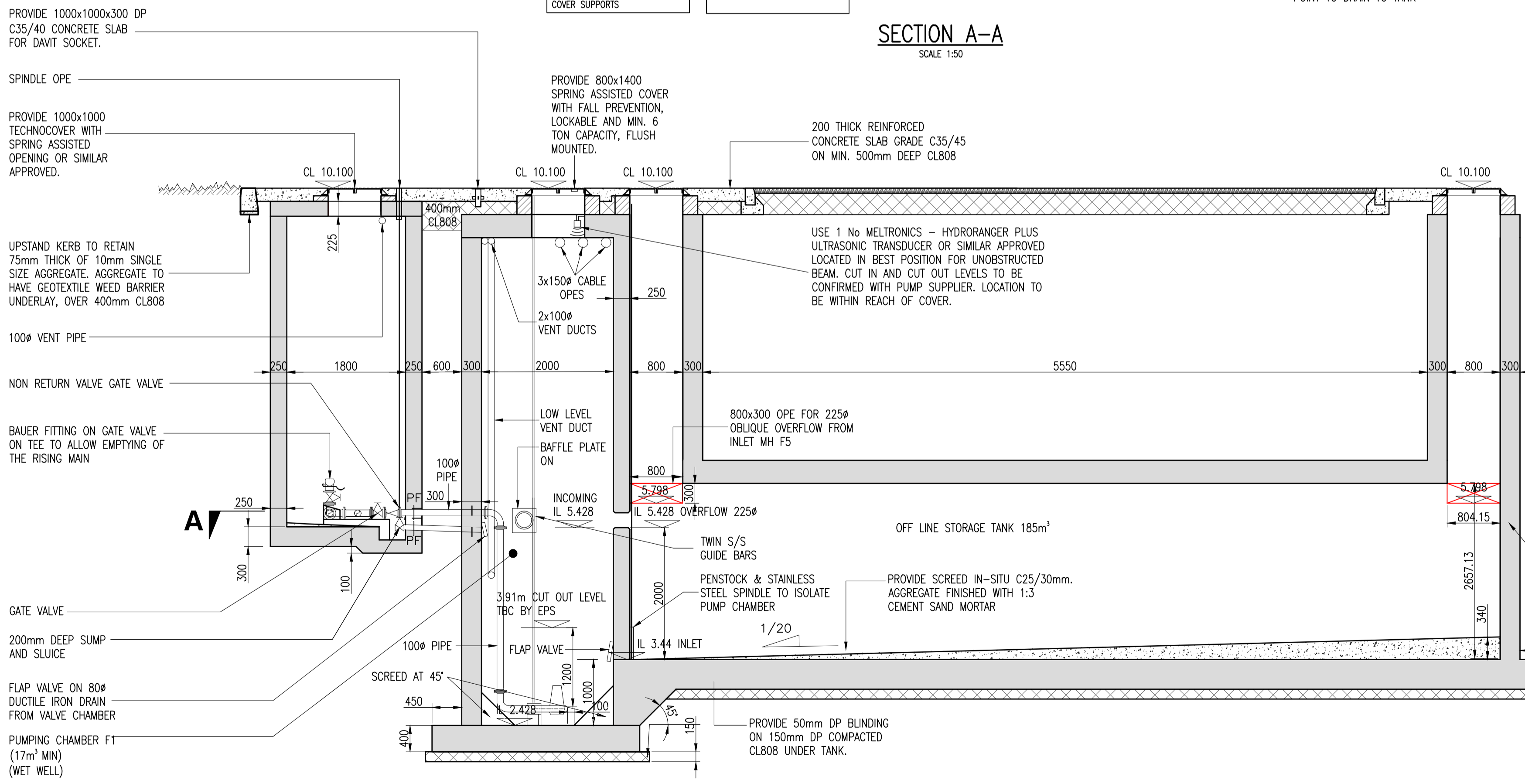
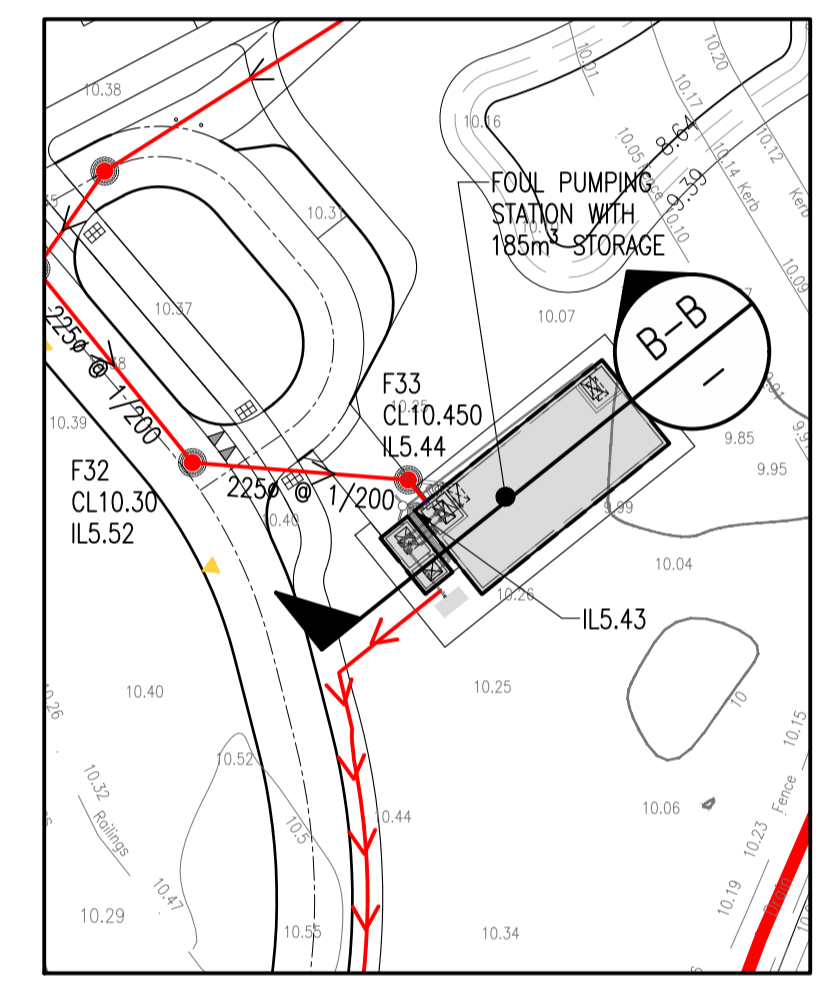


**SECTION A-A**  
SCALE 1:50



**SECTION B-B**  
SCALE 1:50



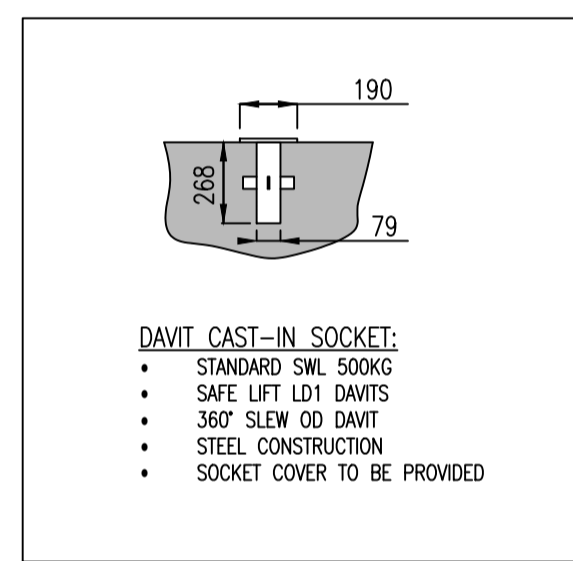
**SECTION LOCATION PLAN**  
SCALE 1:250

REFER TO EPS SPECIFICATION PROPOSAL, REFERENCE SC002521, 03 JANUARY 2019, FOR PROVIDING THE THE FOLLOWING:

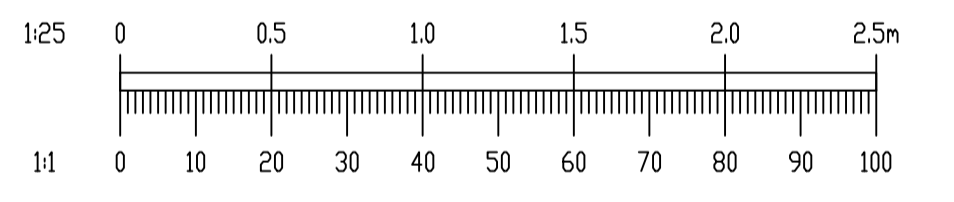
- ITEM NO. 1:  
1 NO. DUTY & STANDBY SEWAGE PUMP SET - ALLOWS FOR 2 NO SUBMERSIBLE ATEX RATED VORTEX PUMPS.  
PUMP MANUFACTURER: ZENIT VORTEX  
MODEL: ZUG\_V100B\_3\_4\_AW\_EX  
OUTLET: 100 MM  
SOLIDS: 100 MM  
MOTOR DETAILS: IE3, 3 KW 400V/ 3 PHASE / 50 HZ / 6 AMPS
- ITEM NO. 2:  
2 NO. 4" AUTO-COUPLING SETS TO ALLOW FOR EASY REMOVAL OF PUMPS FROM WETWELL FROM ABOVE,  
GUIDE RAILS AND STAINLESS STEEL LIFTING CHAIN WITH LIFTING EYE EVERY METER, RATED TO SWL > 2 TIMES PUMP WEIGHT OR 500KG WHICHEVER IS GREATER.
- ITEM NO. 3:  
1 NO. SET OF BLACK BITUMEN COATED 4" DUCTILE IRON PIPEWORK IN WET-WELL AND VALVE CHAMBER INCLUDING 3 NO. CAST-IRON GATE AND 2 NO. NON-RETURN VALVES (100 MM), TERMINATING TO THE NEW HDPE SDR17 4" MAIN.
- ITEM NO. 4:  
1 NO. FORM 2 WALL MOUNTED ELECTRICAL CONTROL PANEL TO CURRENT IW SPEC, TO INCLUDE FOR DUTY / STANDBY OPERATION OF THE PUMP SET C/W AUTO CHANGEOVER ON CYCLE AND PUMP TRIP, PANEL C/W 32AMP, 3PHASE GENERATOR SOCKET AND 3 POSITION ISOLATOR SWITCH. MAIN MCC ENERGY MONITOR ON INCOMER, SEPARATE COMPARTMENTS FOR COMMON CONTROLS (INCL. PLC & HM), TELEMETRY (PLC, HMI & MMIM FREE ISSUE BY IW/FINGAL CC) AND PFC.
- ITEM NO. 6:  
1 NO. ULTRASONIC LEVEL CONTROL SYSTEM. UNIT COMPLETE WITH XRS-5 SUMP MOUNTED EX-RATED SENSOR HEAD - CALIBRATED TO READ UPTO 8M DEEP SUMP. PANEL DOOR MOUNTED CONTROL UNIT C/W LCD SCREEN.
- ITEM NO. 7:  
1 NO. DN100 MAGNETIC FLOWMETER SUITABLE FOR RAW SEWERAGE - WALL MOUNTED CONTROL UNIT C/W LCD SCREEN SHOWING INSTANTANEOUS AND TOTALISED FLOW.
- ITEM NO. 8:  
1 NO. 500KG SWL PORTABLE LIFTING DAVIT & FLUSH FINISHED CAST IN SOCKET. UNIT TO ALLOW FOR EASY REMOVAL OF PUMPS AND EQUIPMENT FROM WET WELL - WHEN USED IN COMBINATION WITH OPERATIVES CERTIFIED BLOCK AND TACKLE SET.
- ITEM NO. 9:  
LOCAL MSG MINI-PILLER AT SUMP C/W JUNCTION BOXES TO ALLOW FOR LOCAL PUMP DISCONNECT - TO INCLUDE FOR LOCAL ISOLATORS AND E-STOPS (TO ENABLE PUMP REMOVAL FROM SUMP/ SITE WITHOUT THE NEED OF AN ELECTRICIAN).
- ITEM NO. 10:  
1 NO. 100MM BAUER CONNECTOR IN VALVE CHAMBER. INCLUDES FOR 4" MALE-END BAUER HOSE CONNECTOR, DI TEE PIECE C/W ISOLATION VALVE. UNIT SUITABLE FOR CONNECTION BY SLUDGE JET VAC TANKER.
- ITEM NO. 11:  
1 NO GRP CONTROL KIOSK C/W ANTI-CONDENSATION HEATER AND LIGHT. DIMENSIONS: 2.5 M LONG X 2.1 M HIGH X 1.2 M DEEP. SEPARATE COMPARTMENT FOR THE FIRE-HOSE REEL, WASH-HAND BASIN AND WATER HEATER.
- ITEM NO. 12:  
1 NO. 6MM PERFORATED BOX OVERFLOW SCREEN WITHIN WETWELL ON HIGHLEVEL PIPES TO OVERFLOW TANK(S).
- ITEM NO. 13:  
1 NO. SANITATION SET TO INCLUDE FIRE HOSE REEL REQUIRED FOR THE WASHING DOWN OF PUMPS, HANDWASH BASIN C/W HOT/COLD TAPS AND WATER HEATER.
- ITEM NO. 14:  
1 NO 1400 X 800MM LIFT ASSIST, MSGALV LOCKABLE SAFETY ACCESS COVER FOR THE PUMPING CHAMBER, 1 NO 1000 X 1000MM FOR THE VALVE CHAMBER AND 1 NO 600 X 600MM FOR THE FLOWMETER CHAMBERS. ALL COVER TO C250 LOAD RATED STANDARD.
- ITEM NO. 15:  
1 NO. ISOLATION VALVE C/W EXTENSION SPINDLE TO ISOLATE THE MAIN GRAVITY INLET TO THE WET WELL INSTALLED IN F5 INLET MH. UNIT C/W EXTENSION SPINDLE TO GROUND LEVEL - FINISHED WITH SURFACE MOUNTED 4" FLUSH FITTED "BISHOPS HAT" COVERS AND CAP TOPS TO SUIT HYDRANT KEY HAND SPINDLE. NRV FLAP VALVES ALLOWED AT RETURN FROM OVERFLOW TANK(S).
- ITEM NO. 16:  
1 NO. 4-5M STAINLESS STEEL 4" SUMP VENT IN WHICH THERE WILL BE SITE LIGHTING ALSO MOUNTED.
- ITEM NO. 17:  
1 NO. MECHANICAL / ELECTRICAL INSTALLATION AND COMMISSIONING.
- ITEM NO. 19:  
PROVISION OF ALL REQUIRED CONTRACT INSURANCES, H&S DOCUMENTATION, INDUCTIONS ONSITE, PERMITS TO WORK, PROJECT SUPERVISION, PROJECT MANAGEMENT, CLIENT LIAISON, DESIGN, APPROVALS O&M, AS BUILT DWGS AND TRAINING.
- ITEM NO. 20:  
MINIMUM OF 3-MONTH MAINTENANCE CONTRACT BY APPLICANT WITH EPS POST COMMISSIONING - TBC BY IW
- ITEM NO. 21:  
(EPS TO INCLUDE IN TENDER)  
ADDITIONAL ISOLATION VALVE ON OUTFLOW FROM TANK STORAGE TO WET WELL TO ALLOW FOR ISOLATION OF WET WELL FORM TANK. STORAGE CAPACITY WITHIN THE FOUL SEWER AND MANHOLES UPSTREAM IS NOT SUFFICIENT DUE TO STEEP GRADES. WET WELL ISOLATION PROVIDED TO GIVE SUFFICIENT TIME FOR WET WELL MAINTENANCE. IW TO COMMENT ON ACCEPTABILITY OF PROPOSAL.
- ITEM NO. 22:  
ACCESS TO STORAGE TANK REVISED TO HAVE IT NEAR WHERE MOST LIKELY MAINTENANCE IS NEEDED, ADJACENT TO WET WELL WALL. W TO COMMENT ON ACCEPTABILITY OF PROPOSAL.

- NOTES:
- DO NOT SCALE. USE FIGURED DIMENSIONS ONLY.
  - THIS DRAWING IS TO BE READ IN CONJUNCTION WITH ALL OTHER RELEVANT ARCHITECTURAL AND ENGINEERING DRAWINGS.
- PUMPING STATION NOTES:**
- FOR REINFORCED CONCRETE DRAWINGS REFER TO CXXXX
  - FORMATION TO TANKS TO BE TESTED PRIOR TO INSTALLATION.
  - MIN CBR VALUES OF 5% TO BE ACHIEVED FOR COMPOUND.
  - ALL FILL MATERIAL TO BE APPROVED BY ENGINEER - CLASS 6F1 COMPACTED IN LAYERS TO SPECIFICATION TO BE PROVIDED AT MINIMUM.
  - CONTRACTOR TO APPLY FOR EIRC/M CONNECTION.
  - CONTRACTOR TO APPLY FOR POWER CONNECTION.
  - CONTRACTOR TO PROVIDE PORTABLE LIFTING DAVIT SWL 500kg.
  - CONTRACTOR TO PROVIDE EXTRA PUMP AND LEAVE WITH IRISH WATER.
  - RISING MAIN TO BE 100mm Ø PE 150 SDR17 OR SIMILAR APPROVED. RISING MAIN ACROSS BRIDGE STRUCTURE OVER TOLKA TO BE DUCTILE IRON SURROUNDED IN 150mm CONCRETE AS PER IRISH WATER STD-WW-23.
  - DAVIT LIFTING ARM TO BE PROVIDED.

TOTAL VOLUME OF EFFECTIVE STORAGE AT PUMPING STATION COMPOUND, OVERFLOW LEVEL AT 31.40m.	
ELEMENT	VOLUME
PUMP SUMP	17.6m³
TANK	94m³
DRAINAGE NETWORK STORAGE	NA
TOTAL STORAGE PROVIDED	111.6m³
LESS SCREED	6.5m³
NET TOTAL STORAGE	105.1m³



**DAVIT SOCKET DETAIL**  
SCALE 1:25



Ordnance Survey Ireland Licence No. EN 0006022 © Ordnance Survey Ireland/Government of Ireland.			
B	07/04/22	REVISED FOR NEW PLANNING APPLICATION	PJD MD
A	07/04/21	REVISED FOR FINAL SUBMISSION	PJD MD
REV.	DATE	AMENDMENT	DRN APPD

STATUS **PLANNING**

**Waterman Moylan**  
Engineering Consultants  
BLOCK 8, EASTPOINT BUSINESS PARK, ALFIE BYRNE ROAD,  
DUBLIN D03 H3F4 IRELAND. Tel: (01) 664 8900  
Email: info@waterman-moylan.ie www.waterman-moylan.ie

CLIENT	KINWEST LTD.
ARCHITECT	CONROY CROWE KELLY ARCHITECTS
PROJECT	AUBURN SHD 2
TITLE	FOUL PUMPING STATION CONSTRUCTION DETAILS

DRAWN	DESIGNED	APPROVED	DATE
PJD	MD	MD	JUN '20
SCALE	JOB NO.	DRG NO.	REVISION
1:2000 @ A1	19-020	P206	B